

PRE-INSULATED PIPES FOR DISTRICT HEATING

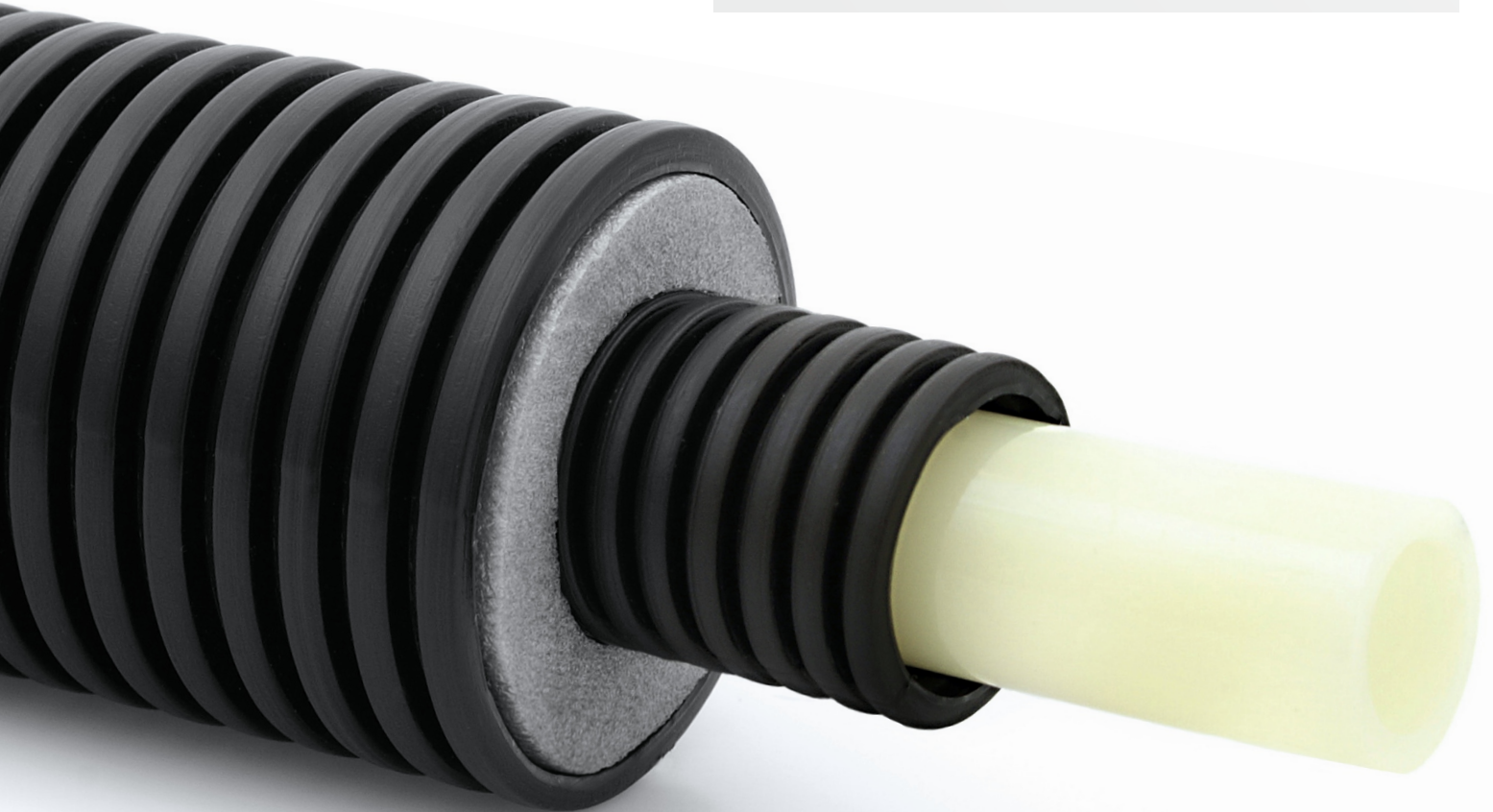
INFLEX[®] HD uno

Inflex HD uno (Heavy Duty)

Inflex HD uno is designed for transporting liquids in heating, sanitary installations and district heating systems. Pipes contain a single carrier pipe. They are insulated with flexible EPE foam and enclosed in an external HDPE corrugated pipe. A multilayer layer of elastic foam provides excellent thermal insulation over a wide temperature range. Insulation's closed-cell structure prevents water absorption and water vapour permeability, and is resistant to mechanical deformation.

The system with internal corrugated pipe permits safe expansion and contraction of the carrier pipe, reducing the risk of uncontrolled leakage caused by inner pipe abrasion. It allows easy replacement of carrier pipes trough pulling it out and inserting a new one without the need to chisel it out of walls, floors or ground.

These pipes have high mechanical strength (500 N), high-impact resistance and flexibility which makes them easy to install. Pipes are recommended for outdoor use in grounds and in areas where special mechanical protection is required. Pipes are available in 6 meter straight lengths and in coils of 25, 50 and 100 meters.



INFLEX HD uno

Carrier pipe diameter (mm)	Pipe symbol	Insulation thickness (mm)	Outside diameter (mm)	Heat emission W/m*	Minimum bending radius (mm)**
16	HD 16x63	19	63	15,19	90
	HD 16x75	22,5	75	13,62	100
18	HD 18x63	18	63	16,68	100
	HD 18x75	21,5	75	14,81	110
20	HD 18x90	28,5	90	13,01	120
	HD 20x75	20,5	75	16,06	110
22	HD 20x90	27,5	90	13,96	120
	HD 20x110	37	110	12,26	130
25	HD 22x75	19,5	75	17,38	120
	HD 22x90	26,5	90	14,95	130
28	HD 22x110	36	110	13,02	140
	HD 25x75	18	75	19,54	200
32	HD 25x90	25	90	16,52	220
	HD 25x110	34,5	110	14,20	240
40	HD 28x90	23,5	90	18,21	220
	HD 28x110	33	110	15,43	240
50	HD 28x160	55	160	12,20	260
	HD 32x90	21,5	90	20,71	240
63	HD 32x110	31	110	17,19	260
	HD 32x160	53	160	13,27	280
75	HD 40x110	27	110	21,21	340
	HD 40x160	49	160	15,55	360
90	HD 40x200	67,5	200	13,10	380
	HD 50x110	22	110	27,70	440
110	HD 50x160	44	160	18,77	460
	HD 50x200	62,5	200	15,32	480
120	HD 63x110	15,5	110	40,51	540
	HD 63x160	37,5	160	23,89	560
130	HD 63x200	56	200	18,57	580
	HD 75x160	31,5	160	30,08	800
140	HD 75x200	50	200	22,10	820
	HD 90x160	24	160	41,23	1100
150	HD 90x200	42,5	200	27,58	1150
	HD 110x200	32,5	200	37,99	1200

The specification can be subject to change without notice.

Carrier pipe

Available types of pipes: **PEX, PEX/AL/PEX, PB, PERT, PERT/AL/PERT, others**

Applications: **heating, sanitary, industrial installations**

Technical parameters conform to the type

Internal protection pipe

Type: **RIW**

Material: **polyethylene mod. (HDPE-mod.)**

Water vapour permeability: **minimum**

Mechanical strength (PN-EN 61386-24): **500N**

Chemical resistance: **excellent**

Colour: **red, blue, black**

Insulation

Material: **Extended polyethylene closed cell foam (EPE)**

Produced without (H)CFC's

Density: **30kg/m3 [+/- 15%]**

Water vapour diffusion resistance: **>3000 μ**

Water absorption: **B - 1%**

The maximum working temperature: **+95°C**

Chemical resistance: **excellent**

Flammability (reaction to fire): **Class F / E / D**

Exterior protection pipe

Type: **RIW**

Material: **polyethylene mod. (HDPE-mod.)**

Water vapour permeability: **minimum**

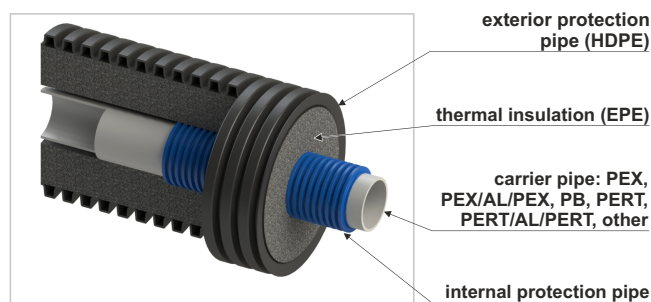
Mechanical strength (PN-EN 61386-24): **500N**

Chemical resistance: **excellent**

UV resistance: **2 years**

Colour: **black**

Pipe section



*Average heat emission in W/m:

- T medium: 75°C

- T environmental: 5°C

- T Δ: 70K

**Reported values may differ from the actual depending on the type of carrier pipe

