

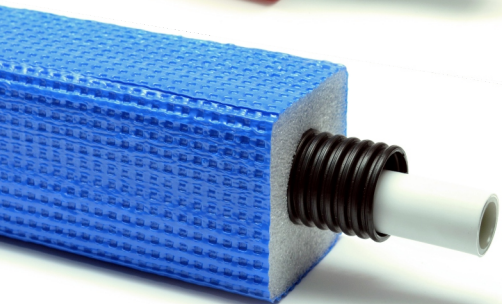
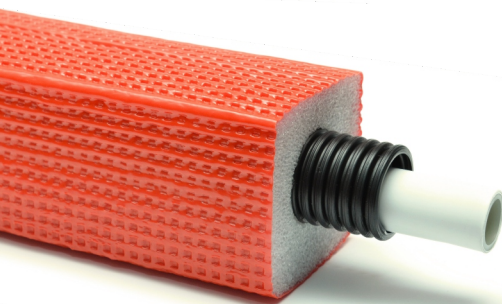


PRE-INSULATED PIPES FOR INDOOR USE

INFLEX® SS/SCKS

Pre-insulated pipes inflex SS/SCKS are designed for transporting liquids in heating and sanitary installations inside buildings. The applied layer of soft EPE foam provides excellent thermal and acoustic insulation over a wide temperature range. The square low profile of the insulation gives the same energy saving rate as higher round profiles. It allows the use of lower floor construction and enables cost reduction. Inner corrugated pipe allows replacement of carrier pipes by pulling it out and inserting a new one without the need to chisel it out of walls or floors.

The closed-cell structure of the material acts against water absorption and water vapor permeability. High flexibility of the pipes makes it easy for carrying out installation. Pipes are available in coils: 25, 50, 75, 100 meters. **Insulation according to standard EN14313.**



Inflex SS (Superior Square)

Pipes recommended for use in wooden constructions and areas difficult to access.

Pipe consists of a carrier pipe, internal corrugated pipe and square profile flexible EPE foam insulation. Inner corrugated pipe permits safe expansion and contraction of the carrier pipe, reducing the risk of uncontrolled leakage caused by inner pipe abrasion. It also protects the inner carrier pipe against external mechanical damage during installation and operation. Insulation does not include protective film.



Inflex SCKS (Superior Coated Knurled Square)

Pipes recommended for use in wooden constructions, traditional (brick) buildings and areas difficult to access.

Pipe consists of a carrier pipe, internal corrugated pipe, square profile flexible EPE foam insulation and knurled outer protective film. Inner corrugated pipe permits safe expansion and contraction of the carrier pipe, reducing the risk of uncontrolled leakage caused by inner pipe abrasion. It also protects the inner carrier pipe against external mechanical damage during installation and operation. The deep ribbing of the knurled film allows a stable and lasting connection with mortar. Knurled film gives the insulation greater resistance to breaking, tearing, puncture and abrasion. It provides a perfect seal against the ingress of moisture from the concrete screed. Available in red or blue colour.



INFLEX SS/SCKS

Carrier pipe diameter (mm)	Pipe symbol	Average insulation thickness (mm)	Height (mm)	heat emission W/m*
15	SS/SCKS 15x6	6	33	8,76
	SS/SCKS 15x9	9	38	7,51
	SS/SCKS 15x13	13	46	6,47
	SS/SCKS 15x20	20	58	5,40
16	SS/SCKS 16x6	6	33	9,44
	SS/SCKS 16x9	9	38	8,00
	SS/SCKS 16x13	13	46	6,83
	SS/SCKS 16x20	20	58	5,64
18	SS/SCKS 18x6	6	36	9,91
	SS/SCKS 18x9	9	41	8,43
	SS/SCKS 18x13	13	48	7,20
	SS/SCKS 18x20	20	61	5,95
20	SS/SCKS 20x6	6	39	10,04
	SS/SCKS 20x9	9	45	8,64
	SS/SCKS 20x13	13	52	7,43
	SS/SCKS 20x20	20	64	6,18
22	SS/SCKS 22x6	6	43	10,14
	SS/SCKS 22x9	9	48	8,81
	SS/SCKS 22x13	13	55	7,64
	SS/SCKS 22x20	20	68	6,38
25	SS/SCKS 25x6	6	46	11,10
	SS/SCKS 25x9	9	51	9,60
	SS/SCKS 25x13	13	58	8,28
	SS/SCKS 25x20	20	71	6,88
28	SS/SCKS 28x6	6	49	11,72
	SS/SCKS 28x9	9	55	10,16
	SS/SCKS 28x13	13	62	8,77
	SS/SCKS 28x20	20	74	7,28
32	SS/SCKS 32x6	6	53	12,93
	SS/SCKS 32x9	9	58	11,17
	SS/SCKS 32x13	13	65	9,59
	SS/SCKS 32x20	20	78	7,91

*Average heat emission in W/m:
 - T medium: 50°C
 - T environmental: 20°C
 - T Δ: 30K

The specification can be subject to change without notice.

Carrier pipe

Available types of pipes: **PEX, PEX/AL/PEX, PB, PERT, PERT/AL/PERT, others**

Applications: **heating, sanitary, industrial installations**
 Technical parameters conform to the type

Protection pipe

Type: **RIW**

Material: **polyethylene mod. (HDPE-mod.)**

Water vapour permeability: **minimum**

Mechanical strength: **500N**

Impact resistance: **2,0kg/100mm**

Chemical resistance: **excellent**

UV resistance: **2 years**

Colour: **red, blue, black**

Insulation

Material: **Extended polyethylene closed cell foam (EPE)**

Produced without (H)CFC's

Density: **30kg/m³, +/- 10%**

Thermal Conductivity (λ)

0,039 W/m·K 40°C

0,041 W/m·K 50°C

Water vapour permeability: **3.170 μ**

Water absorption: **B - 1%**

The minimum working temperature: **-50°C**

The maximum working temperature: **+95°C**

Chemical resistance: **excellent**

Flammability (reaction to fire): **Class F / E / D**

Coating

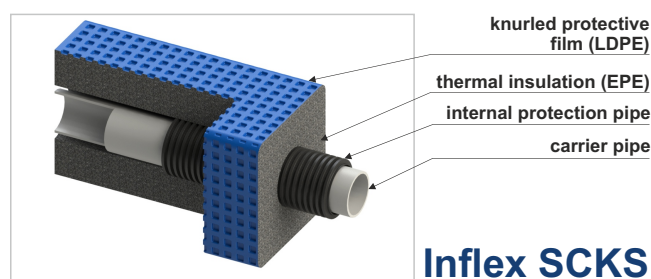
Material: **Polyethylene mod. (LDPE-mod)**

Water vapour permeability: **minimum**

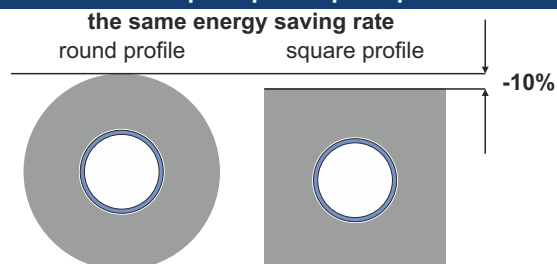
Chemical resistance: **excellent**

Colours: **red, blue**

Pipe section



The square profile principle



ZPTS INGREMIO-PESZEL
 ul. Laskowska 93, PL 32-329 Bolesław
 tel. +48 (32) 647 19 00, 647 19 01
 fax +48 (32) 647 19 19
 www.ingremio.com.pl
 e-mail: biuro@ingremio.com.pl

