

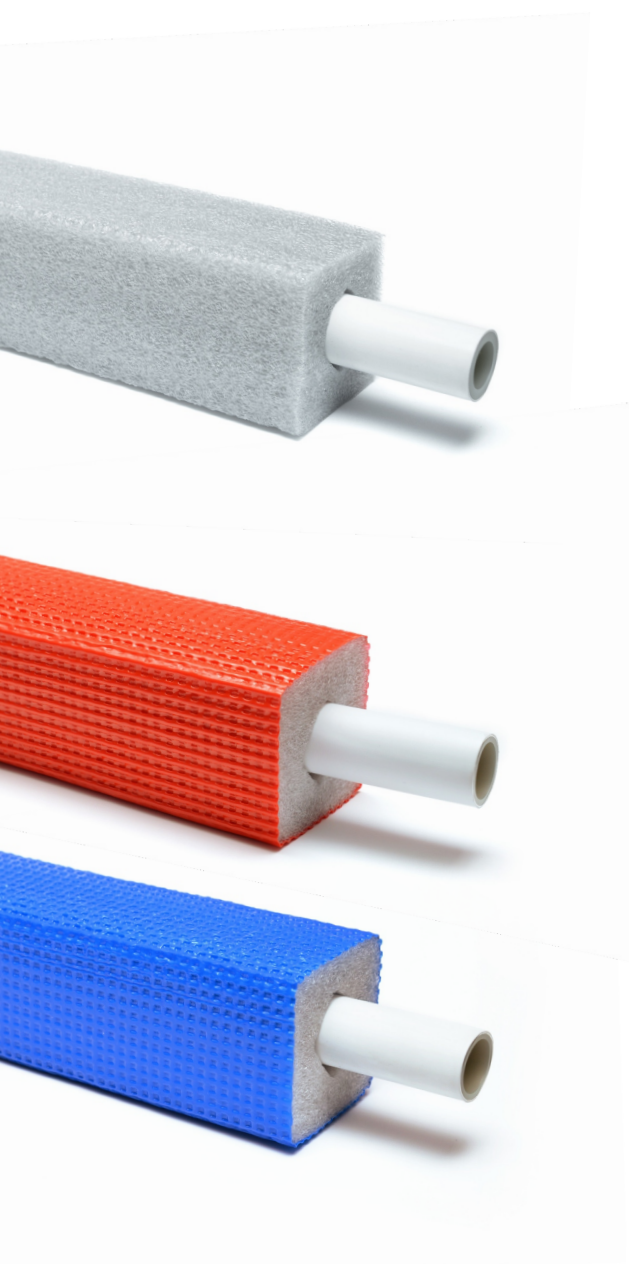


## PRE-INSULATED PIPES FOR INDOOR USE

# INFLEX® BS/BCKS

Pre-insulated pipes inflex BS/BCKS are designed for transporting liquids in heating and sanitary installations inside buildings. The applied layer of soft EPE foam provides excellent thermal and acoustic insulation over a wide temperature range. The square low profile of the insulation gives the same energy saving rate as higher round profiles. It allows the use of lower floor construction and enables cost reduction.

The closed-cell structure of the material acts against water absorption and water vapor permeability. High flexibility of the pipes makes it easy for carrying out installation. Pipes are available in coils: 25, 50, 75, 100 meters. **Insulation according to standard EN14313.**



### Inflex BS (Basic Square)

Pipes recommended for use in wooden constructions and areas difficult to access.

Pipe consists of a carrier pipe inserted into square profile flexible EPE foam insulation. Insulation does not include protective film.



### Inflex BCKS (Basic Coated Knurled Square)

Pipes recommended for use in wooden constructions, traditional (brick) buildings and areas difficult to access.

Pipe consists of a carrier pipe inserted into square profile flexible EPE foam insulation and knurled outer protective film. It has a deep ribbing which allows a stable and lasting connection with mortar. The high quality of the knurled film gives the insulation greater resistance to breaking, tearing, puncture and abrasion. It provides a perfect seal against the ingress of moisture from the concrete screed. Available in red or blue colour.



# INFLEX BS/BCKS

www.ingremio.com.pl

modern technical idea

Carrier pipe diameter (mm)	Pipe symbol	Average insulation thickness (mm)	Height (mm)	heat emission W/m*
15	BS/BCKS 15x6	6	24	12,50
	BS/BCKS 15x9	9	30	9,32
	BS/BCKS 15x13	13	37	7,31
	BS/BCKS 15x20	20	49	5,66
16	BS/BCKS 16x6	6	25	13,13
	BS/BCKS 16x9	9	30	9,75
	BS/BCKS 16x13	13	38	7,61
	BS/BCKS 16x20	20	50	5,87
18	BS/BCKS 18x6	6	27	14,38
	BS/BCKS 18x9	9	32	10,60
	BS/BCKS 18x13	13	39	8,22
	BS/BCKS 18x20	20	52	6,28
20	BS/BCKS 20x6	6	29	15,63
	BS/BCKS 20x9	9	34	11,45
	BS/BCKS 20x13	13	41	8,82
	BS/BCKS 20x20	20	54	6,69
22	BS/BCKS 22x6	6	30	16,88
	BS/BCKS 22x9	9	36	12,29
	BS/BCKS 22x13	13	43	9,42
	BS/BCKS 22x20	20	55	7,09
25	BS/BCKS 25x6	6	33	18,74
	BS/BCKS 25x9	9	38	13,55
	BS/BCKS 25x13	13	46	10,31
	BS/BCKS 25x20	20	58	7,69
28	BS/BCKS 28x6	6	36	20,60
	BS/BCKS 28x9	9	41	14,80
	BS/BCKS 28x13	13	48	11,19
	BS/BCKS 28x20	20	61	8,28
32	BS/BCKS 32x6	6	39	23,07
	BS/BCKS 32x9	9	45	16,46
	BS/BCKS 32x13	13	52	12,35
	BS/BCKS 32x20	20	64	9,06

\*Average heat emission in W/m:

- T medium: 50°C
- T environmental: 20°C
- T  $\Delta$ : 30K

The specification can be subject to change without notice.

## Carrier pipe

Available types of pipes: **PEX, PEX/AL/PEX, PB, PERT, PERT/AL/PERT, others**

Applications: **heating, sanitary, industrial installations**

Technical parameters conform to the type

## Insulation

Material: **Extended polyethylene closed cell foam (EPE)**

Produced without (H)CFCs

Density: **30 kg/m<sup>3</sup>, +/- 10%**

Thermal Conductivity ( $\lambda$ ):

**0,039 W/mK 40°C**

**0,041 W/mK 50°C**

Water vapour resistance: **3.170  $\mu$**

Water absorption: **B - 1 %**

Minimum working temperature: **-50 °C**

Maximum working temperature: **+95 °C**

Chemical resistance: **excellent**

Flammability (reaction to fire): **Class F / E / D**

## Coating

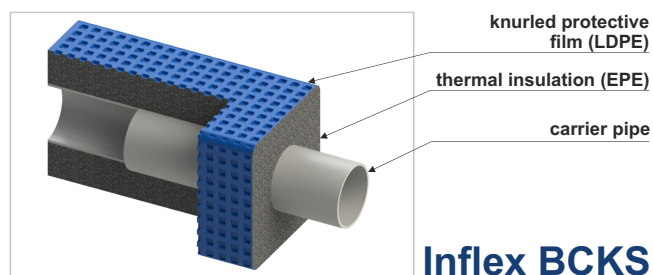
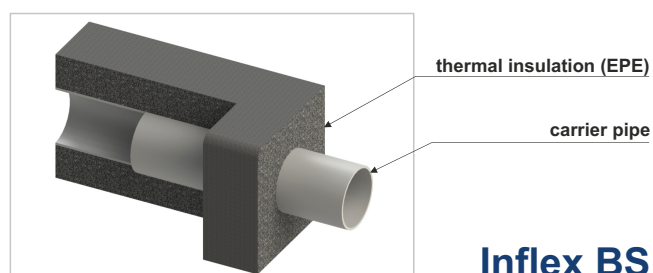
Material: **Polyethylene mod. (LDPE mod.)**

Water vapour resistance: **minimum**

Chemical resistance: **excellent**

Colours: **red, blue**

## Pipe section

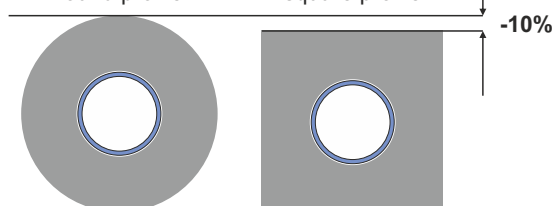


## The square profile principle

the same energy saving rate

round profile

square profile



ZPTS INGREMIO-PESZEL  
ul. Laskowska 93, PL 32-329 Bolesław  
tel. +48 (32) 647 19 00, 647 19 01  
fax +48 (32) 647 19 19  
www.ingremio.com.pl  
e-mail: biuro@ingremio.com.pl

